



Collaborative Research Funding Landscape

Clint Styles, NAMRIP Funding Lead

March 2018

Global Context (UK Alignment)

Sustainable Development Goals (SDGs)



UK Funding Landscape

- Research Councils
- EU (H2020 collaborative bids)
- Charities and Foundations
- Societies
- Innovate UK
- Industry



➡ Most are geared towards funding UK researchers

Specific UK Funding to Work with Overseas Partners

- Department for International Development (DfID) (£1.5bn)
- Newton Fund (£735m UK contribution; 15 partner countries providing matched resources within the fund)
- The Global Challenges Research Fund GCRF (£1.5bn)
- Ross Fund (£1bn focused on health)
- Fleming Fund (£195 million focused on antimicrobial resistance)



What is the GCRF?



Global Challenges Research Fund (GCRF)

GCRF - £1.5bn development funding for research (2016/17 – 2020/21).

Aims:

- address complex Global societal challenges
- support frontier interdisciplinary research and innovation, build capability both within UK and developing countries
- advance agendas for sustainable development, eradicate poverty, combat inequalities and strengthen global governance
- provide agile response to sudden emergencies or new opportunities

RCUK GCRF Challenge Areas

Health

To tackle diseases, strengthen health systems and reach the worlds most vulnerable.

Clean Energy

To provide access to clean energy, including new technologies and the behavioural insights required for successful introduction to developing countries.

Sustainable Agriculture

To improve nutrition and food security, support technological innovation, and increase resilience to climate change

Conflict & humanitarian action

New insights and approaches for preventing conflict and violence, build stability and strengthen humanitarian action.

Foundations for Inclusive Growth

To understand what works best for developing countries to build the foundations for economic development - macroeconomics, institutions, innovation and private sector growth, cities and infrastructure, education systems, jobs and skills.

Other potential topics

Resilient systems

Mass Migration and Refugee Crises

Delivery Partners



Cyngor Cyllido Addysg
Uwch Cymru
Higher Education Funding
Council for Wales

hefcw

THE ROYAL SOCIETY



EPSRC

Engineering and Physical Sciences Research Council



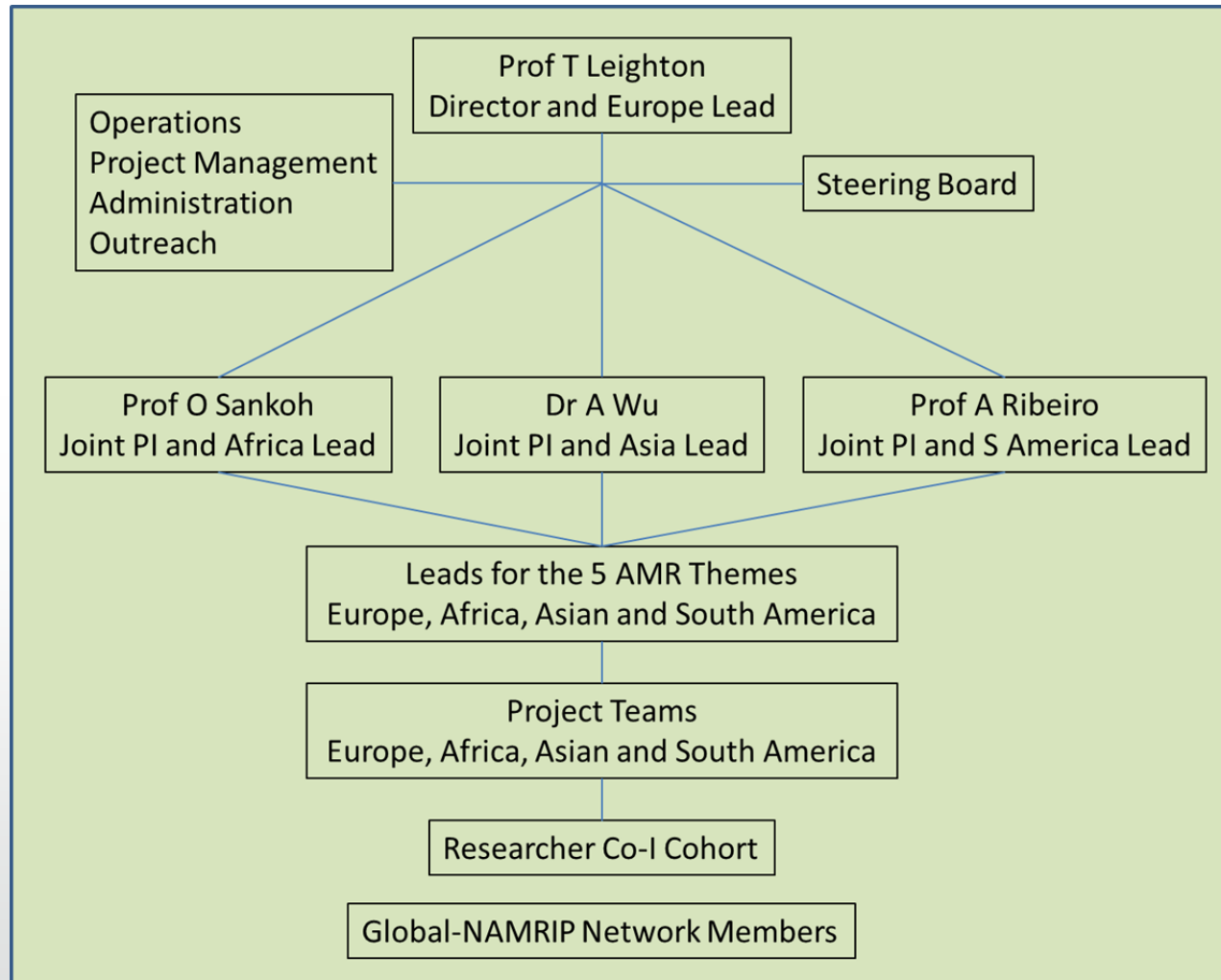
GCRF | Global Challenges Research Fund

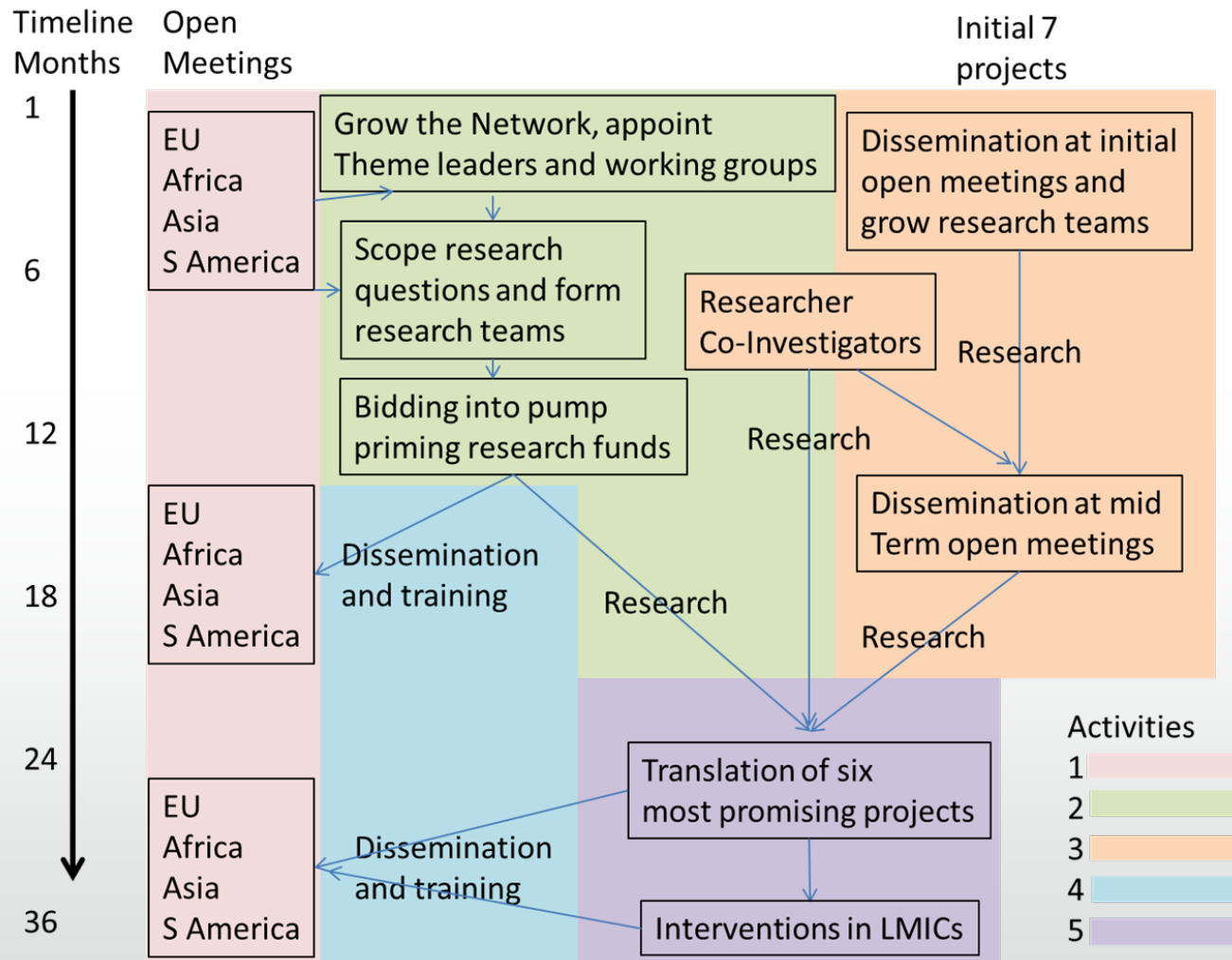
GCRF: Key Criteria

- Research Excellence new approaches not constrained by traditional methodologies or disciplinary silos
- Official Development Assistance (ODA) compliance OECD guidelines
- Equitable Partnerships and Building Capacity strong and enduring partnerships between UK and developing-country researchers to enhance the research and innovation capacity of both
- Impact: Problem and Solution Focused substantial impact on improved social welfare, economic development, and environmental sustainability globally
- Co-creation of solutions

Funding Calls

Call title	Council	Closing date
GCRF New Models of Sustainable Development	ESRC	11 January 2018
New social and cultural insights into mental, neurological and substance use disorders in developing countries	ESRC	11 January 2018
EqUIP call for collaborative research on sustainability, equity, wellbeing and cultural connections	AHRC	30 November 2017
Sustainable Agriculture for Sub-Saharan Africa (SASSA)	BBSRC	8 November 2017
BBSRC GCRF Strategic Training Awards for Research Skills (GCRF-STARS)	BBSRC	1 November 2017
Pre-announcement: Global Challenges Research Fund Translation Award	BBSRC	25 October 2017
Sustainable Agriculture for Sub-Saharan Africa (SASSA) call	BBSRC	8 November 2017
AHRC-MRC Global Public Health: Global Challenge Research Fund Partnership Awards (Call 2)	AHRC	26 October 2017
Interdisciplinary Research Hubs to Address Intractable Challenges Faced by Developing Countries	RCUK	29 September 2017
Bioinformatics and Biological Resources Fund	BBSRC	28 September 2017
Resilient and sustainable energy networks for developing countries	EPSRC	21 September 2017
Confidence in Global Mental Health Research: Institutional "pump-priming" awards	MRC	14 September 2017
Institutional "pump-priming" awards to develop new opportunities in Global Nutrition and Health Research	MRC	14 September 2017
STFC Global Challenge Research Fund Foundation Awards	STFC	5 September 2017
Bioinformatics and Biological Resources Fund Expression of interest	BBSRC	13 July 2017
Innovation Follow-on Call: Enabling innovation in the UK and developing countries	NERC	12 July 2017





Next Steps

- Yesterday: Projects talks. New partnerships and follow-on funding.
- This morning: Developing research questions, key problems, likely solutions, new partnerships in order to continue development of research projects.
- GCRF deadlines are short so we need research teams and ideas that are well formed (individual projects and Global-NAMRIP).
- NAMRIP will monitor funding calls, disseminate and offer bid support.

Any questions?



OECD DAC Country List

